

# SEA-Mate® Filter Solutions



## Optimizing Marine Lubrication

In the dynamic world of maritime operations, efficiency, sustainability, and cost-effectiveness are crucial. The SEA-Mate® Filter System stands as a **sustainable solution** for cleaner lubrication oil, with a focus on **oil and energy reduction**, **cleaner oil**, **ease of use**, and **cost-efficiency**.

## Key Features

**High Dirt Holding Capacity:** The filtering units guarantee optimal performance by efficiently filtering contaminants, resulting in equipment lifetime extension.

**Customization:** Different filter inserts allow for tailored cleanliness standards, ensuring the flexibility to meet various operational requirements.

**Ease of Operation:** Filters are designed for uncomplicated operation, making maintenance an easy job.

**Compatibility:** The filter seamlessly integrates with the SEA-Mate® Blending-on-Board system, offering proven benefits such as lower oil discharge and reduced energy consumption.



## Technical Advancements

Based on HYDAC Technology, the offline lubrication oil filters maintain two- and four-stroke engines across all fuel types, with the achievement of high-quality lubrication oil.

**Energy Savings:** Unlike separators, the filter operates without consuming any energy, providing a more sustainable solution.

**Simplicity and Efficiency:** The SEA-Mate® filter offers a secure, simple, and easy-to-operate system that saves energy and **operational & maintenance costs** and **running 24/7 without any oil loss**.

The lubrication oil filters, **tested with success by MAN Energy Solutions\* and approved by DNV**, to extend the service life of engines, reduce running and maintenance costs, and improve environmental performance by contributing to CII rating.

\* Tested in 2022, supervised by MAN, onboard a 3600 TEU Container Vessel, ME type: 6S70ME-C8.5, HYDAC Filter type: LMPD-T-3 (Pmax: 16 bar).

# SEA-Mate® Filter Solutions



## Dimensions

**H x W x L:** 1250 x 345 x 410 mm

**Weight:** approx. 80 kg.

**Volume:** approx. 35 L

**Allowable operating pressure:** 10 bar / 145 PSI

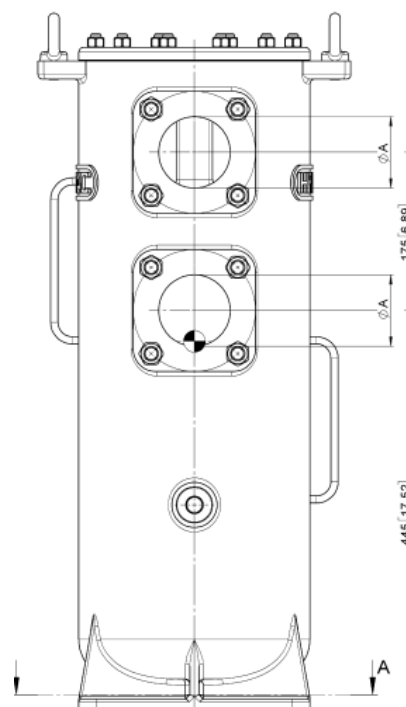
**Test pressure:** 16 bar / 232 PSI

Multiple options for flange connections

## FFE Elements

**Filtration area:** 39,000 cm<sup>2</sup>

**Beta rating:** B2 – 1µm particles



## Financial Benefits

**Reduced System Oil Losses:** Unlike separators, there are no oil losses from filter operation.

**Lower Maintenance Costs:** Reduced running hours give significantly lower maintenance costs of centrifuges.

**Risk Mitigation:** Reduced costly overhauls & operations, ensuring predictable & stable operational environment.

**Energy Efficiency:** The filter consumes less energy compared to traditional centrifuges.

Discover the true value of your investment and let us calculate the return of your investment before making your final decision.

We consider various parameters, including electricity savings, oil consumption and sludge reduction.

Please contact us directly on: [mftservice@marinefluid.dk](mailto:mftservice@marinefluid.dk)